

SPECIFICATIONS:

- FREQUENCY:.....2 GHz TO 18 GHz
- INSERTION LOSS:.....2 GHz TO 11 GHz: 2.5db
11 GHz TO 16 GHz: 2.8db
16 GHz TO 18 GHz: 3.1db
- INSERTION LOSS BALANCE:.....THE INSERTION LOSS DIFFERENCE BETWEEN ANY TWO OF THE FOUR RF CHANNELS DOES NOT EXCEED 0.7 dB AT ANY GIVEN FREQUENCY WITHIN THE PASS-BAND OF THE SWITCH.

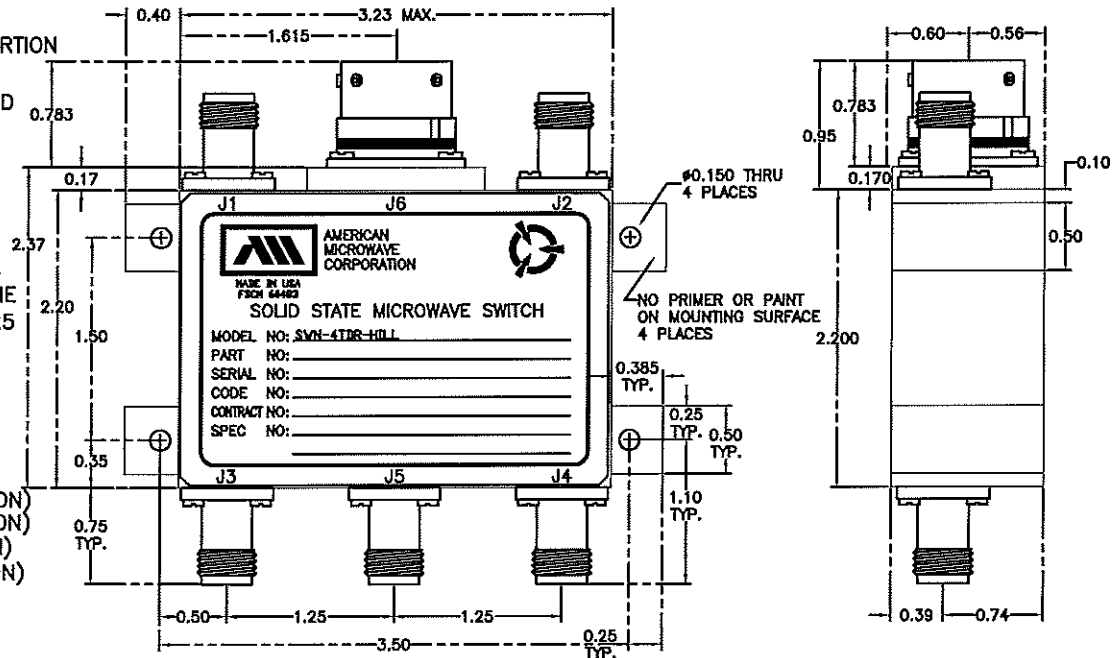
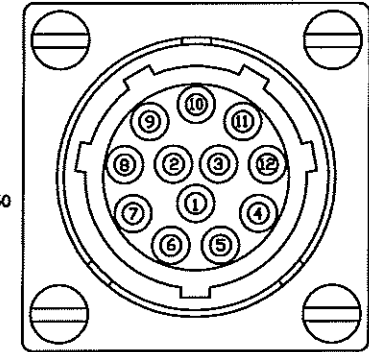
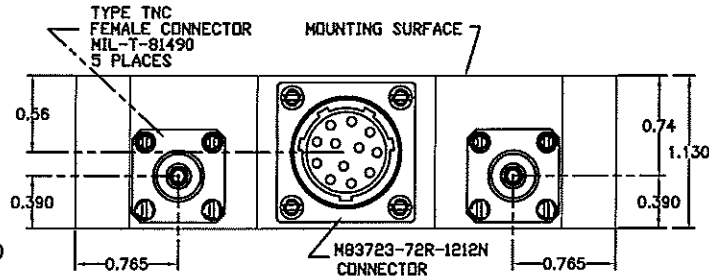
THE INSERTION LOSS DIFFERENCE BETWEEN J2-J5 AND J4-J5 OR J1-J5 AND J3-J5 WHEN EITHER PAIR OF CHANNELS ARE IN THE INSERTION LOSS STATE AND WHEN ONE OF THE TWO ARMS ARE TERMINATED INTO 50 OHMS, DOES NOT EXCEED 2.2 dB AT ANY GIVEN FREQUENCY WITHIN THE PASS-BAND OF THE SWITCH.
- ISOLATION:.....2 GHz TO 18 GHz: 45db MINIMUM
- VSWR:.....2.2:1 MAXIMUM ON ANY ONE ARM IN THE INSERTION LOSS STATE AND 4.4:1 ON TWO ARMS IN THE INSERTION LOSS STATE (WITH THESE TERMINATED INTO 50 OHMS).
- SPEED:.....DELAY ON: 200ns MAXIMUM
DELAY OFF: 200ns MAXIMUM
- POWER INPUT:.....(CW)+20dBm
- SURVIVAL POWER:.....1 WATT CW OR 100 WATTS PEAK WITH A 0.005 DUTY CYCLE WITH ANY ONE RF CHANNEL IN THE INSERTION LOSS STATE AND 250 mW CW OR 25 WATTS PEAK WITH TWO RF CHANNELS IN THE INSERTION LOSS STATE.
- CONTROL:.....TTL LOGIC "0" (0 TO +0.8 VOLTS) = ON
"1" (+2 VOLTS OR GREATER) = OFF
(SEE LOGIC TABLE)
- POWER SUPPLY:.....+5V @ 105 mA MAXIMUM (ONE RF CHANNEL ON)
+5V @ 70 mA MAXIMUM (TWO RF CHANNELS ON)
-15V @ 60mA MAXIMUM (ONE RF CHANNEL ON)
-15V @ 70mA MAXIMUM (TWO RF CHANNELS ON)

ENVIRONMENTAL RATINGS:

- TEMPERATURE:.....-55°C TO +85°C (OPERATING)
-65°C TO +125°C (STORAGE)
- HUMIDITY:.....MIL-STD-202F, METHOD 103B COND. B
- SHOCK:.....MIL-STD-202F, METHOD 213B COND. B
- VIBRATION:.....MIL-STD-202F, METHOD 204D COND. B
- ALTITUDE:.....MIL-STD-202F, METHOD 105C COND. B
- TEMPERATURE CYCLE:.....MIL-STD-202F, METHOD 107D COND. A

NOTE: THE ABOVE SPECIFICATIONS ARE SUBJECT TO CHANGE OR REVISION

REVISIONS				
ZONE	REV.	DESCRIPTION	DATE	APPROVED
		JOB # 409166E HILL AFB	1/20/98	
B		SEE ECR# 09-016	4/9/99	U



LOGIC TABLE				
CONTROL INPUT	J1-J5	J2-J5	J3-J5	J4-J5
J6-4	0	1	1	1
J6-5	1	0	1	1
J6-6	1	1	0	1
J6-7	1	1	1	0

ALL DIMENSIONS ARE IN INCHES
TOLERANCES:

X.XX ±0.020
X.XXX ±0.010

PART NO.		AMERICAN MICROWAVE CORPORATION FREDERICK, MARYLAND	
APPROVALS	DATE	TITLE	
DRAWN WSP	1/20/98	OUTLINE DRAWING SWN-4TDR-HILL REFLECTIVE SOLID STATE SWITCH	
CHECKED JK	4/7/99	SIZE	FSCM NO.
ISSUED		A	60483
		DWG NO.	100-4305-2
		REV.	B
SCALE		SHEET 1 of 1	